



# CENTER PARK PLACE

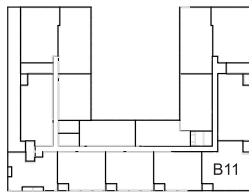
## MODEL B11

RESIDENCE 605

2 BEDROOM  
2.5 BATHROOMS  
1,390 SQ FT

### FEATURES & AMENITIES

- Luxury finishes
- Open floor plan
- 10' ceilings
- Secure private garage
- Pool deck
- Fitness center
- Residence lounge
- Rooftop terrace



KEY PLAN - B11 - LEVEL 6



Although all illustrations, specifications and dimensions are believed correct at the time of publication, accuracy cannot be guaranteed. The right is reserved to make changes without notice or obligation. Windows, doors and ceilings may vary on the options and elevations selected. Optional items indicated are available at additional cost. This brochure is for illustrative purposes only and not part of a legal contract. See Sales Representative for details. Coldwell Banker has Ownership of all Artwork including original digital files as well as preliminary designs. Artwork cannot be used without written permission of Coldwell Banker.